

Part No.

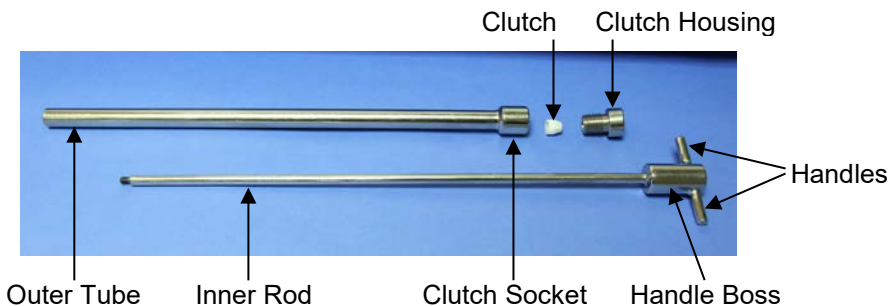
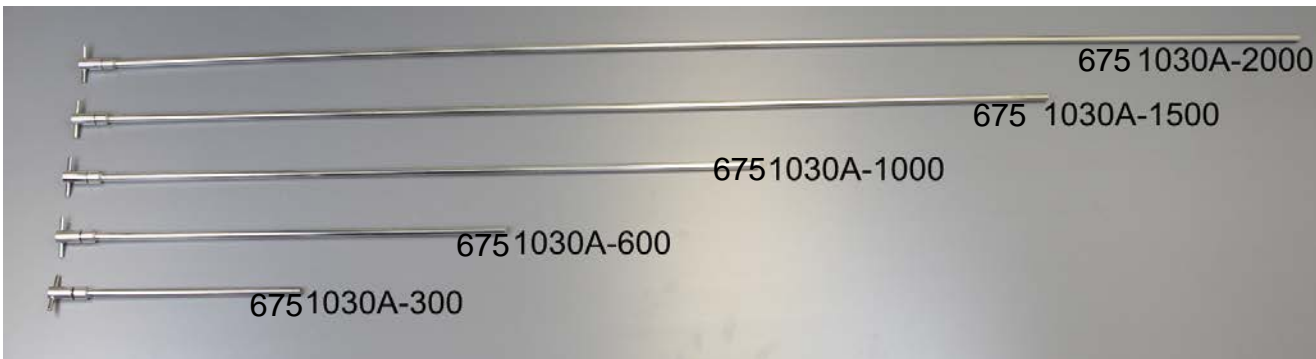
675 1030A all lengths

Description

PowderThief - 12.5mm diameter



Part No:	Overall Length	Weight
675 1030A300	370 mm	350 g
675 1030A600	665 mm	540 g
675 1030A1000	1065 mm	795 g
675 1030A1500	1565 mm	1020 g
675 1030A2000	2065 mm	1485 g



Materials of Construction:

Inner Rod: 316 stainless steel  
 Handles: 316 stainless steel  
 Handle Boss: 316 stainless steel  
 Outer Tube: 316 stainless steel  
 Clutch Housing: 316 stainless steel  
 Clutch Socket: 316 stainless steel  
 Clutch: PTFE

Finish:

<1 microns Ra

Recommended Storage Conditions:

Dry and ambient temperature

Spare Parts:

PTFE Clutch Part No: SS002300  
 Clutch Housing Part No: SS001900