

Auger sampler EST48

For sampling free flowing solids



QAQC LAB

www.qclabequipment.com



- Please read carefully -

Subject to change.

Reproduction prohibited. Reproduction only with explicit permission of FOSBA GmbH.

The manufacturer is not liable for transport damage or damage caused by improper operation of the device.

Content

1. Description of components and assemblies.....Page 3

2. Safety regulations.....Page 4

3. Technical data.....Page 5

4. Installation and operation.....Page 6

 4.1. Installation.....Page 6

 4.2. Startup.....Page 7

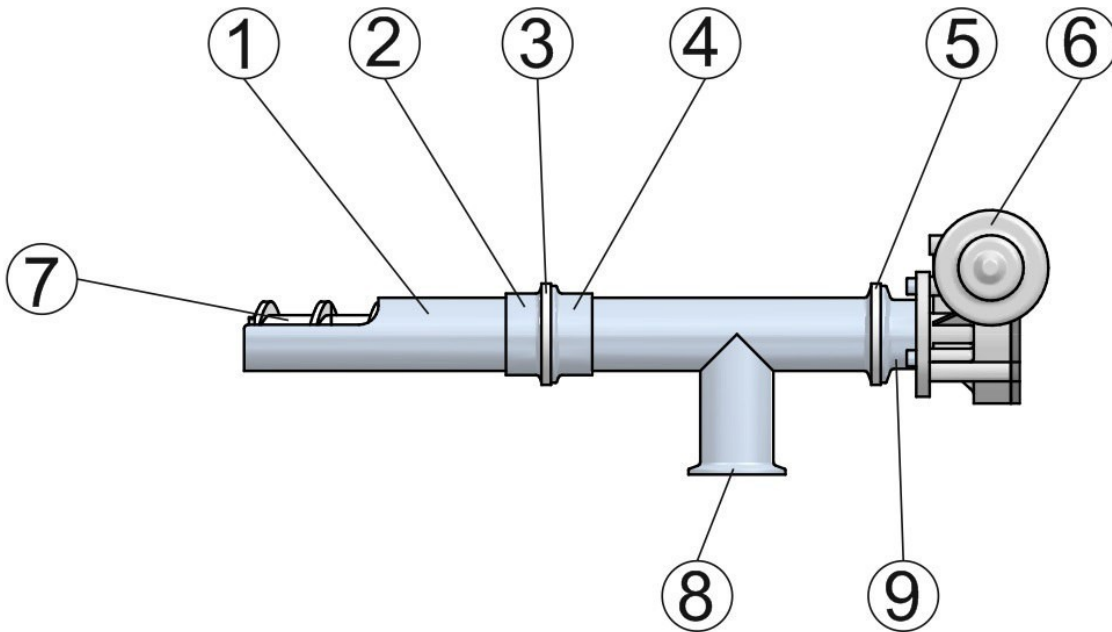
 4.3. Sampling.....Page 7

 4.4. Operating advices.....Page 7

 4.5. Cleaning and maintenance.....Page 7

5. Help.....Page 8

1. 2. Description of components and assemblies



- 1. Housing T-Piece
- 2. Triclamp (TC) - welding flange Ø51
- 3. Triclamp (TC) - gasket DN 50
- 4. Triclamp (TC) - flange DN Ø51
- 5. Triclamp (TC) - gasket 48.3
- 6. Electric motor 24 V /3,5A
- 7. Auger
- 8. Sample outlet 1,5" Triclamp (TC)
- 9. Bearing housing, slide bearing und motor connection
- 10. Triclamp (TC) - clamp 2 *

*not shown

2. Safety regulations

- Every user has to know the operating instructions and it has to be handy all the time. Use of sampler only in context of material resistance. Parts with product contact are made of V4A (1.4404) / POM / HPU (food law).
- Handling with dangerous products only with protective clothing (safety glasses, -gloves, -apron and -boots)
- Safety instructions of the manufacturer have to be considered.
- Use tool only without a danger for the user or other persons.
- In case of using or maintenance, the tool has to be handled carefully. Never use force.
- **Startup only with a suitable collecting system is installed at the sample outlet.**



**Cut of power supply
(compressed air, electricity)
before opening or removing
the sampler**

3. Technical data

- 24 volt electric motor

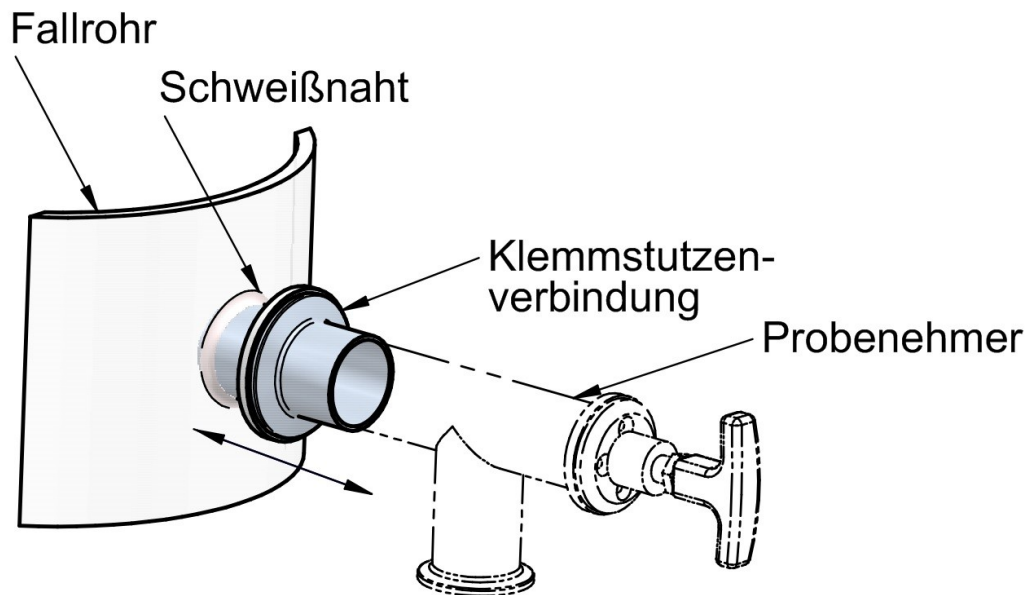
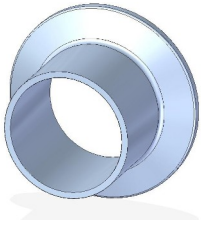
Nominal voltage:	24 V
Nominal current:	3,5
Nominal torque:	4 Nm
RPM:	85 /min.
Initial torque:	35 Nm
Initial current	30 A
weight:	1,7 Kg



Installation and operation

4.1 Installation

The supplied triclamp (TC)-welding flange 51mm has to be welded onto the wall of the duct or the down pipe. For that a bore of 51 mm diameter has to be cut into the wall. When welding the flange please spot weld first to avoid deformation of the flange. After that the complete flange can be welded tightly. Now the sampler can be inserted in the welding flange and be fitted to the mounting flange with the TC-clamp and TC-gasket. The penetration depth can be adjusted as per operation requirements.



4.2 Startup

Wiring according to applicable standards.

The motor can be run in forward and reverse operation by switching the polarity.

4.3 Sampling

By activating the motor, the auger conveys the product into the sampling container. Before the sampling, the auger can be activated in reverse mode for removing the remaining product (cleaning-function).

4.4 Operation advices

The EST sampling-system is basically suitable for bulk products with maximum particle size of 6 mm. The system can be installed in drop pipes, chambers, containers and silos. The compatibility of the media to be sampled in connection with the materials and the functioning of the sampler is the responsibility of the user.

Cleaning and maintenance

The Sampler should frequently be disassembled and cleaned.– particularly in case of a batch changing. For this, the system has to be cut off from the power supply, then taken off and disassembled in the workshop.

Simplified cleaning:

By releasing the rear TC-clamp close to the motor the drive unit and the screw conveyor can be withdrawn from the housing and cleaned. The housing itself can be cleaned in the still fitted with a tube brush and/or compressed air.

At the front TC-clamp the entire system can be easily dismounted from the mounting point. A blind cover (AD=50.5mm) can be used to cover the sampling point in absence of the sampler.

Cleaning interval

The cleaning intervals depend on the usage of the product and the frequency of the operation. We recommend to set-up the cleaning schedule according to the requirements in the maintenance timetable and then comply exactly.

6. Help

If you need further help or advice for the installation, startup or the maintenance, please don't hesitate to contact us:

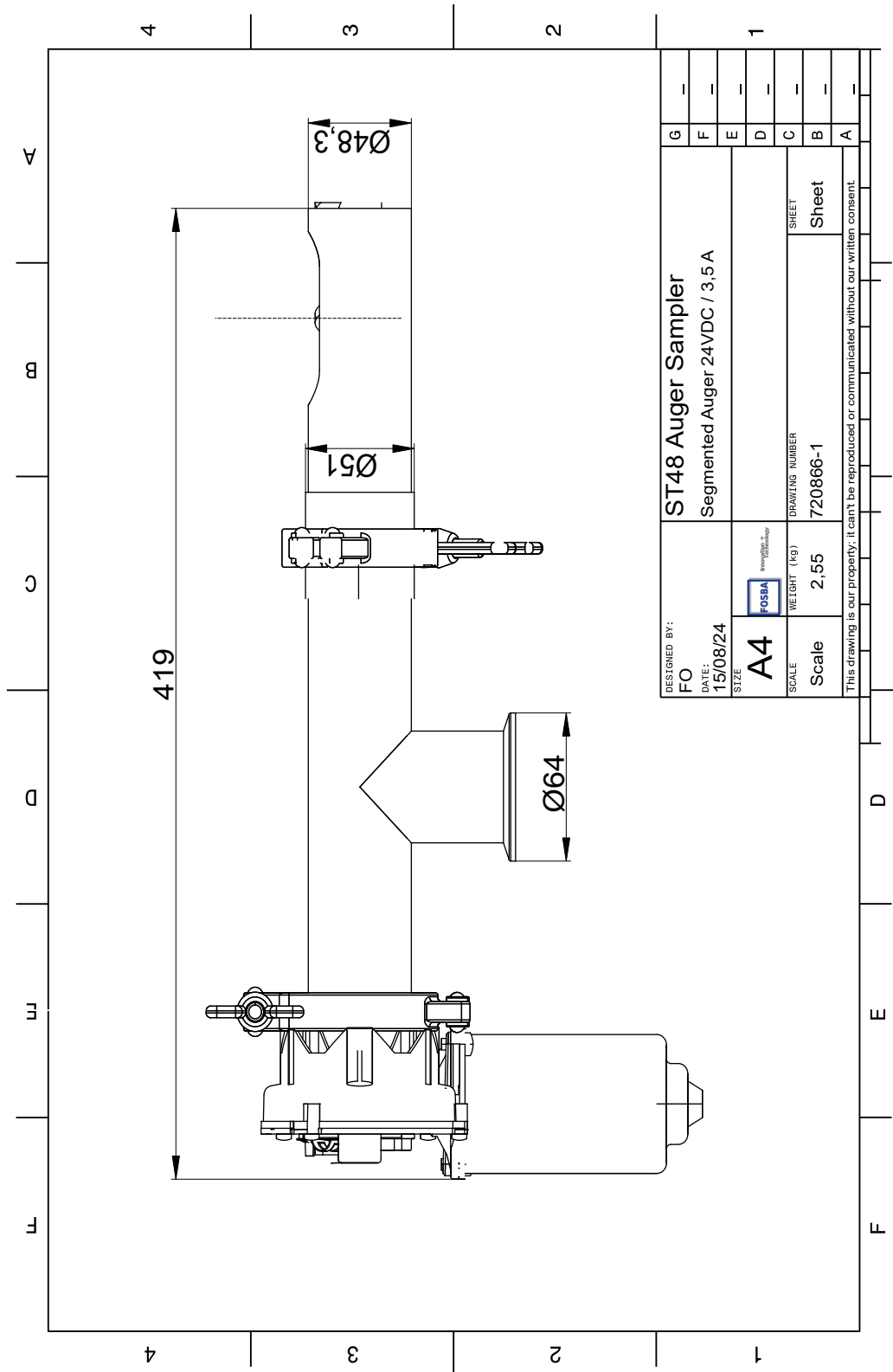
FOSBA GmbH

Itzelstein 15
59929 Brilon -Germany

Tel.: +49 2961 9119233
Fax: +49 2961 9119250

e-mail: info@fosba.de
web: www.fosba.de

GMP Sampling is a brand of FOSBA GmbH



DESIGNED BY:	FO	ST48 Auger Sampler	G
DATE:	15/08/24	Segmented Auger 24VDC / 3.5 A	F
SIZE:	A4	WEIGHT (KG)	E
SCALE:	Scale	DRAWING NUMBER	D
		720866-1	C
		SHEET	B
		Sheet	A
This drawing is our property. It can't be reproduced or communicated without our written consent.			

