

# Rover Sampler

Bulk Sampling from Silos or Tankers



Sampling from road tankers and silos has always been very difficult, that was until the arrival of the Silo Rover.

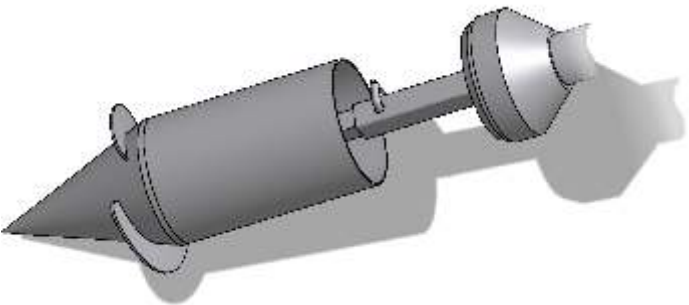
- Heavy duty stainless steel construction
- Simple to operate
- 2m length
- Scroll end to aid insertion of sampler into dense powders or granules
- 1 litre sample volume
- Weight of empty sampler: 10kg



Control to open the sampler



Stand to hold Sample Collecting Chamber



## Operation

- The Rover **Sampler** is quick and easy to operate.
- Work sampler into the powder or granules.
- Open chamber which will allow powder to flow in.
- Close chamber and remove sampler.

| Part No.      | Nominal Capacity                        | Diameter |
|---------------|---|----------|
| 675 1076A2000 | 1 liter                                 | 70mm     |
| 675 1076S1    | Stand to hold Sample Collecting Chamber |          |

**QUOTE REQUEST** ✓